

data sheet

IMAGELINE

37 - 95 SE OFF-LINE



Colenta[®]

**for Graphic Art Films and PE-Printing Plates (up to 0,2 mm)
IMAGELINE SE - TYPE 100 cm/min at 20 sec dev time**

Colenta Imageline[®]

37 - 95 SE

All SE-Type processors with 9 preprogrammable processing cycles, intermediate rinse bath rack system, open stand, daylight feed box and with 2 x 30 ltr. replenisher tanks

Note: Additional Top Feed Load for SE-Type not available

Film thickness: min. 0,10 mm up to 0,2mm
 PE Plate thickness: min. 0,10 mm up to 0,2mm
 Material width: min. 7,5 cm - max. **37/43/56/68/80/95** cm
 Material length: min. 14 cm
 Dev.time: min 20 sec - max 100 sec

Dry to Dry: min. 112sec - max. 484 sec

		IL 37 SE	IL 43 SE	IL 56 SE	IL68 SE	IL 80 SE	IL 95 SE
Tank capacity -	Developer:(L)	6	6,5	8	10	11	12
	Fixer: (L)	6	6,5	8	10	11	12
	Wash water:(L)	6	6,5	8	10	11	12

Solution heating(Fix and DEV): adjustable in a range of 18°C - 43°C
 (separate inline 350W heaters)

Dryer: warm air
 variable in a range of 18°C - 55°C

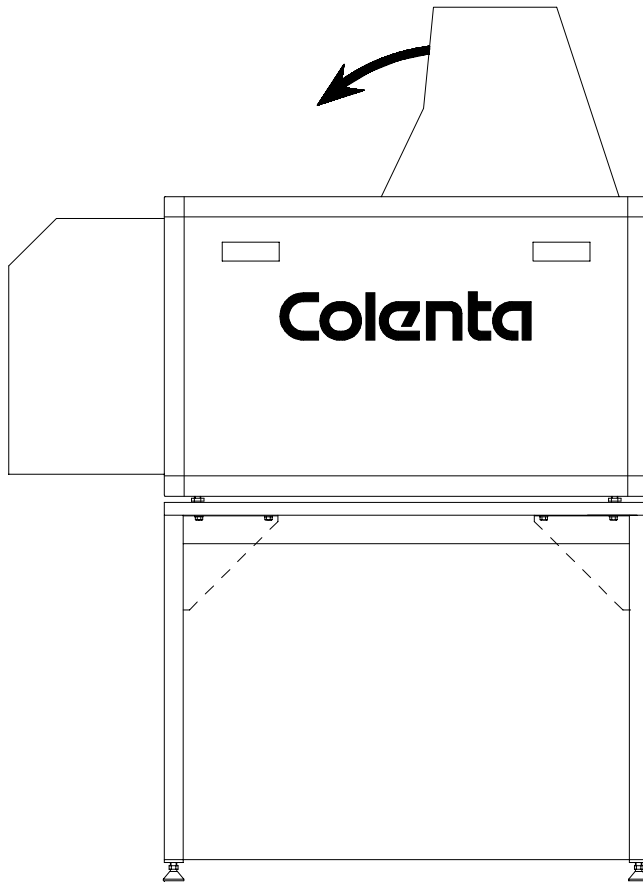
Replenishment: fully automatic.
 replenishment is microprocessor controlled and calculated from information received from sensors measuring the width and length of material entering the processor. Replenishment cycles are adjustable

Wash water distribution: built in 3-way magnetic valve
 Wash water flow rate: 1,5 ltr/min when film is processed
 Wash water supply pressure: 3 - 10 bar
 Wash water supply: filtered at a temperature of 10°C - 25°C
 with 3/4" hose connection
 Wash water drain: 32mm (5/4inch) hose or tube

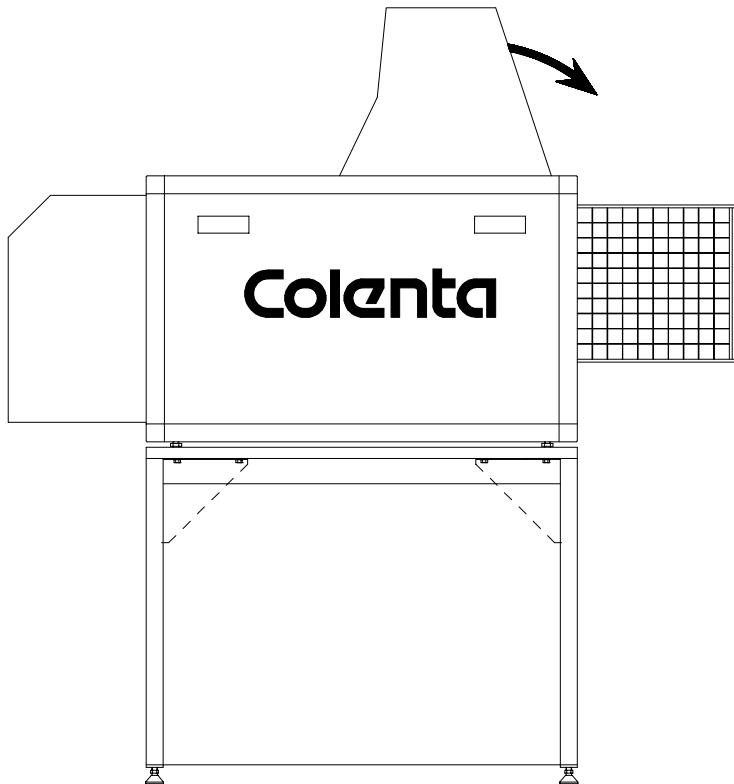
		IL 37 SE	IL 43 SE	IL 56 SE	IL68 SE	IL 80 SE	IL 95 SE
<u>Weight:</u>	Empty	113 kg	127 kg	143 kg	163 kg	176 kg	192 kg
	With solution	134 kg	146 kg	167 kg	193 kg	209 kg	228 kg

Technical specification subject to change without notice.

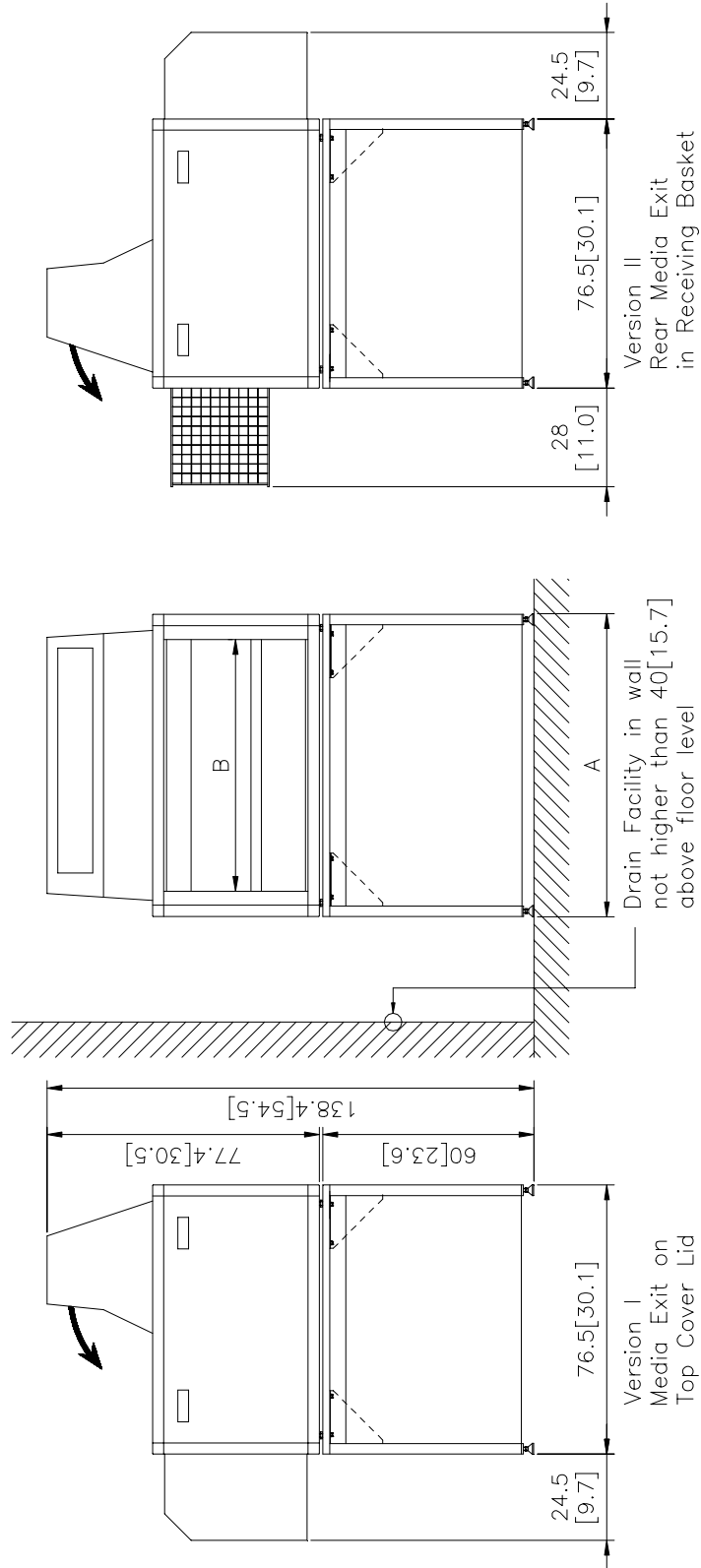
**VERSION I
Media Exit on
Top Cover Lid**



**VERSION II
Rear Media Exit
in Receiving Basket**



Dimensions of *IMAGELINE 37 - 95 SE*: cm(inch)

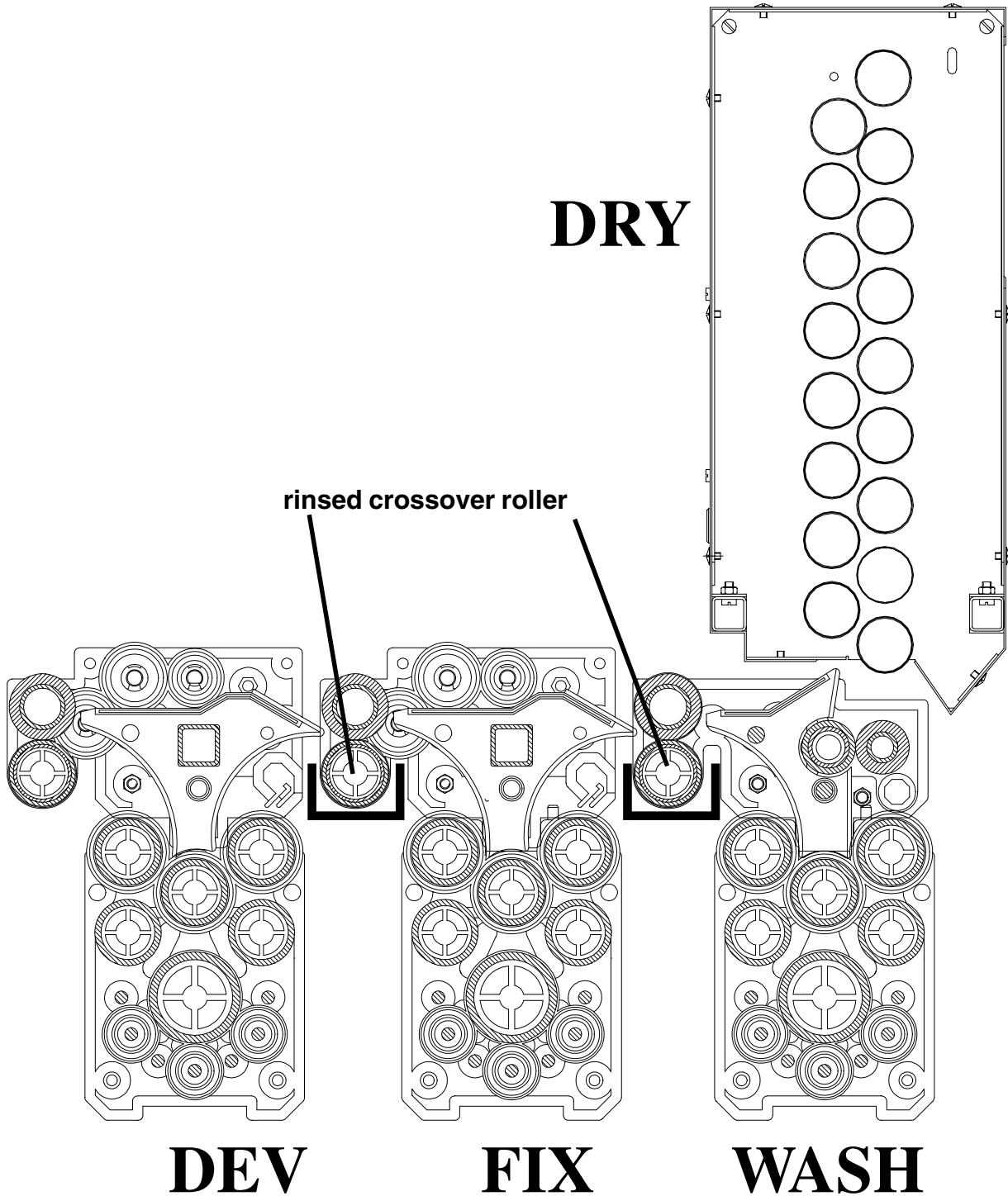


Typ of Processor	I M A G E L I N E				
	37SE	43SE	56SE	68SE	80SE 95SE
A cm[inch]	65 [25.6]	73 [28.7]	86 [33.9]	96 [37.8]	110 [43.3] 125 [49.2]
B cm[inch]	50 [19.7]	58 [22.8]	71 [28.0]	81 [31.9]	95 [37.4] 110 [43.3]

Transportsystem:

37 SE - 95 SE

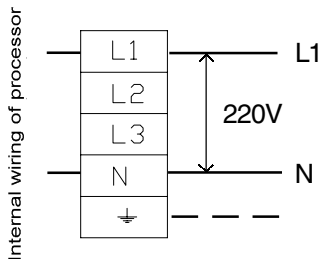
DRY



Electrical supply: (Standard, when 3N~400/230V, 50/60 Hz supply available)

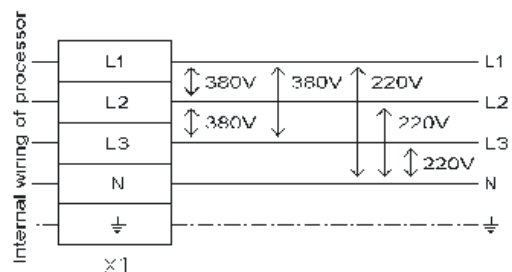
	single phase 230 V,50/60 Hz	3 N 400/230 V 50/60Hz
IL 37 SE	3,1 kW 16 A	-----
IL 43 SE	3,1 kW 16 A	-----
IL 56 SE	3,1 kW 16 A	-----
IL 68 SE	3,6 kW 16 A	-----
IL 80 SE	-----	4,4 kW 10 A
IL 95 SE	-----	5,2 kW b10 A

ATTENTION:
PROCESSOR TO BE CONNECTED TO
SUPPLY NET: 220V 50/60Hz



In case the above voltages are not available at site, please contact your local dealer or the factory for rewiring advice.

ATTENTION:
PROCESSOR TO BE CONNECTED TO
SUPPLY NET: 3N~380/220V 50/60Hz

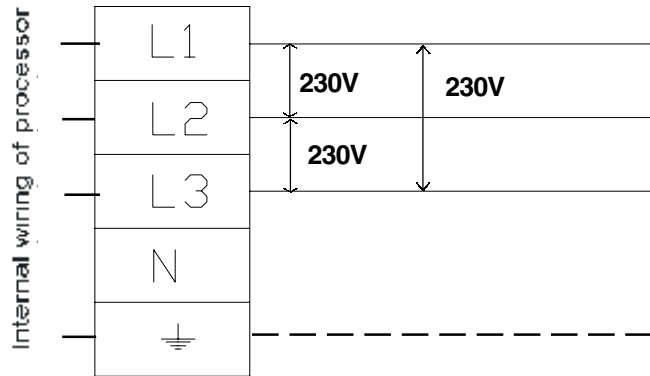


In case the above voltages are not available at site, please contact your local dealer or the factory for rewiring advice.

Electrical supply:

(alternatives, to be indicated when ordering)

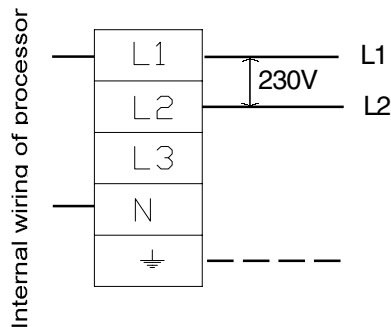
ATTENTION:
PROCESSOR TO BE CONNECTED TO
SUPPLY NET: 3 x 230V



3 x 230V ,
50/60 Hz

In case the above voltages are
not available at site, please
contact your local dealer or
the factory for rewiring advice.

ATTENTION:
PROCESSOR TO BE CONNECTED TO
SUPPLY NET: 230V 50/60Hz



Single Phase
230V ,50/60 Hz

In case the above voltages are
not available at site, please
contact your local dealer or
the factory for rewiring advice.

Details for shipment:

IL 37 SE	packing dimensions: packing volume: weight with packing:	1 carton box on palette 150cm x 80cm x 112cm (L x W x H) 1,344 m ³ 160 kg
IL 43 SE	packing dimensions: packing volume: weight with packing:	1 carton box on palette 150cm x 80cm x 112cm (L x W x H) 1,344 m ³ 170 kg
IL 56 SE	packing dimensions: packing volume: weight with packing:	1 carton box on palette 150cm x 93cm x 112cm (L x W x H) 1,562 m ³ 195 kg
IL 68 SE	packing dimensions: packing volume: weight with packing:	1 carton box on palette 150cm x 117cm x 115cm (L x W x H) 2,01 m ³ 220 kg
IL 80 SE	packing dimensions: packing volume: weight with packing:	1 carton box on palette 150cm x 117cm x 115cm (L x W x H) 2,01 m ³ 250 kg
IL 95 SE	packing dimensions: packing volume: weight with packing:	1 carton box on palette 180cm x 123cm x 123cm (L x W x H) 2,72 m ³ 280 kg